

DDM Professional

DesignDataManager

DDM Professional runs as a fully integrated module of the following 3D modeling design applications;

- Pro/ENGINEER®
- Solidworks®
- IronCAD®
- Solid Edge®
- Autodesk Inventor®

Concurrent Engineering

From familiar Windows XP look and feel interfaces, the user can review and enter design data, search and retrieve parts, assemblies, drawings plus associated documentation, in a secure and true multi-user environment.

Searches can be made on part, model, drawing and document data attributes. For example by project, part no, status, designer, description, date last modified, etc. These can be viewed, entered or modified via the DDM Properties interface.

Increased Productivity

Projects with large amounts of document and design data are managed by DDM's rich and powerful set of features, to greatly increase workgroup productivity and provide mechanisms to aid ISO 9000 control and traceability.

DDM saves valuable time by answering such questions as:

1. Where is the part or assembly used?
2. When was the data last modified and by whom?
3. What models, drawings and documents are used on this project and who is working with them?
4. What is the current status of a part, assembly, drawing or document?

Which eliminates the need to ask...

1. Where is the drawing and model for this part stored?
2. Can I update this part or assembly?
3. What is the next available part or assembly number?

Release & Revision Control

DDM has a built in Up-issue and Release Management facility, that eases the administrative overhead of version controlling for single or multiple parts or documents while taking into account your user permissions that are determined by a configurable group based access control mechanism.

Out of the Box

DDM can be productive for your Company straight out of the box, without any customisation or modification using the standard schema with pre-configured user groups, states and access permissions.

However, DDM is a highly configurable product, which can be tailored to meet specific customer requirements, such as auto-part numbering, MRP integration, specialised reporting, remote access and legacy data import.

DDM provides a valuable and time saving fourth dimension to any 2D/3D application installation.

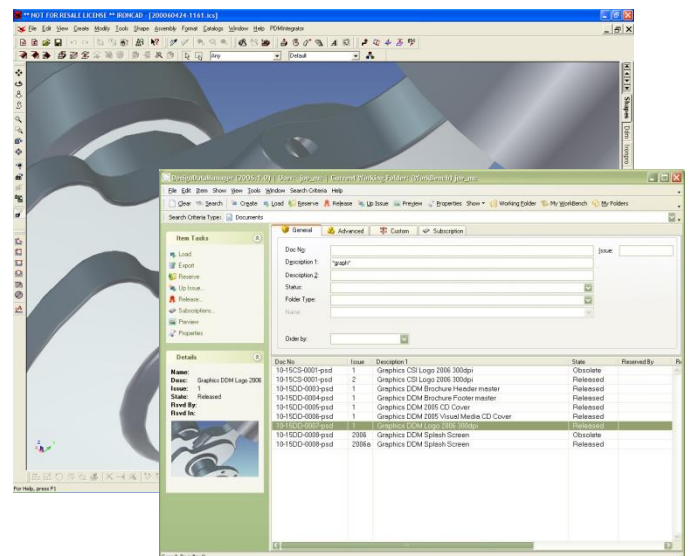
Document Management

DDM Office is bundled as standard with DDM Professional. The DDM Office Solution caters for all your Document Management needs and supports most Windows single file formats such as WORD, Excel and PowerPoint. Please refer to the DDM Office brochure for more information.

Non-drawn Part Management

Provides the ability to manage non-drawn parts and assemblies, including references to there non-drawn parts within assemblies, such as bought-in components.

This can be used to store legacy data, carry out design prototyping or simply to include non-drawn parts into Bills of Materials.



Engineering Change Note (ECN)

When creating a new issue of a part, assembly, drawing or document in DDM the user will automatically be presented with an ECN screen where they can enter the reasons/details of the change.

DDM Professional

Part, Assembly, Drawing and Related Document Locate, Store & Load

A user-friendly method of locating, loading or storing parts, assemblies, drawings and related documentation via 'Object' data querying. For example by project, designer, date created/modified, etc.

Title Block Management

Automatic population of pre-defined Title Blocks with any/all of the Object 'data' available.

Personal "WorkBench"

A user has a set of parts, assemblies, drawings and documents, which are being worked on, on a day-to-day basis. These are placed on the 'WorkBench' and will always be opened read/write for that user. All other users are only able to open them read only until they are returned to the database 'Vault'.

Import/Export

Used to import existing parts, assemblies or drawings into DDM & export parts, assemblies, drawings or documents out of DDM.

Multi User Environment

The access to parts, assemblies, drawings and documents is controlled, allowing only one user to open them for read/write, while multiple users can open them read only.

Copy Model/Drawing

Copy a part or assembly to another part or assembly. Assemblies retain the part relationships which existed within the original assembly.

Query & Report Functions

Standard reports are available such as Bill of Materials and Where Used.

Drawing PDF Generation

DDM Professional automatically creates a PDF (DWF for Autodesk Inventor) rendition of the stored CAD drawing, to enable non-CAD users to view the drawing via the DDM Office or DDM Web products.

Where Used

Identify where a part or assembly is used, enabling the user to assess the impact of making a change to a common part.

Configuration Management

Bill of Material Management controls the relationships between parts, assemblies and their issues, including the inclusion of non-drawn/modelled parts.

Extensive 'Object' Attributes

A standard set of data attributes are associated with each 'Object' type including parts, assemblies, drawings documents and projects.

Configurable User Defined Attributes

The system administrator can easily define an infinite number of site-specific data attributes against parts, assemblies, drawings and documents. These can be compulsory or voluntary.

System Requirements

Client

- 200Mb free disk space
- Microsoft Windows XP Professional (32bit/64bit)
- Microsoft Vista Business/Ultimate (32bit/64bit)
- Microsoft .Net Runtime Framework 2.0*

Server

- 1Gb free disk space
- Microsoft Windows 2003/2008 Standard Server
- Microsoft Windows XP Pro (Limited to 10 concurrent connections)
- Microsoft Internet Information Services (IIS)**
- Microsoft .NET Runtime Framework 2.0*
- Microsoft XML Core Services v.4.0 & v.6.0*

Database

- Microsoft SQL Server 2005 Express
- Microsoft SQL Server 2005

The above is in addition to hardware requirements for your 2D and 3D CAD applications.

* The .NET framework and XML core services are freely available Microsoft components available through the Microsoft update website.

All prerequisite Microsoft components are required to be updated with latest service packs and hotfixes.

** IIS is a Microsoft component which is freely available by installing it from your Operating System media or via the 'Application' server role configuration.