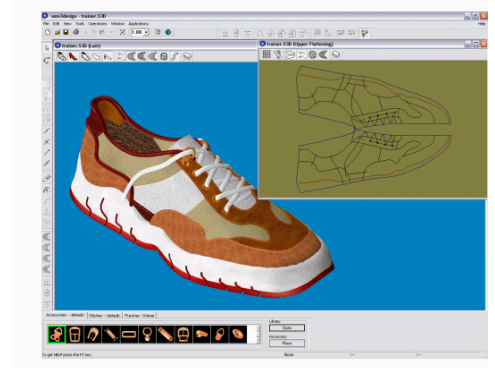


Case Study - Mark Blatherwick, Design Manager

1. What benefits has DesignDataManager brought to your organisation?

As an organisation we moved from Pro/ENGINEER Release 18 using Pro/PDM to Pro/ENGINEER 2001 using DDM. The benefits in making this transition have been significant. In relation to DDM we have a data management system that is much better suited to our organisation – it is straight forward yet powerful and it is virtually self-maintaining. As a manager, and a non Pro/ENGINEER user, I now have the ability to view models and drawings without having to interrupt the design team. In addition I can bring documentation relating to the design under data management control allowing them to be shared across the design team.



2. What influenced your choice to choose DesignDataManager over alternative PDM systems?

We were caught in PTC's trap! We were being forced to move to Pro/INTRALINK, which appeared to be even more complicated than Pro/PDM. PTC were unable to convert our Pro/PDM data to Pro/INTRALINK and PTC's press releases did not give me any confidence that Pro/INTRALINK would be supported long term. Moving to DDM meant we had a data management system that could be accessed across the company and we became a voice that is heard by the supplier.

3. Has DesignDataManager directly influenced decreased development timescales at your company?

DDM does impact on development time – mainly for the reasons highlighted above (e.g., ease of use, minimal maintenance and visibility to non-Pro/ENGINEER users). We are currently considering extending the visibility of our designs by investing in the DDM Web Client. This would give anyone in the organisation read only access to the latest drawings – the next logical step would then be to extend this to our suppliers. So as yet we haven't exploited the full benefits of the system yet we can expand this at a pace to suit us.

4. Could you envisage working without data management? Please expand on this if you wish?

No! I firmly believe that data management is a pre-requisite for any organisation, whether there is just one designer or a team. I couldn't envisage working without it.

5. Please make any additional comments that you feel appropriate regarding DesignDataManager or of the CSI organisation/people.

This is an excellent product that integrates neatly into Pro/ENGINEER and gives across the company access to the latest design information. CSI give the very best support and are committed to moving their product forward by talking and listening to their customers.

About BUSM

BUSM has served shoemakers world-wide for over one hundred years. The company has played a major role in developing shoemaking from a cottage craft into an industry, and is now bringing the advantages of high technology to today's shoemakers. Shoemaking has come a long way from the days when manual skills began to be replaced by early mechanised production. Today, high productivity footwear manufacturing has entered the computer age, with BUSM leading the way into the new era.

<http://www.usmgroup.com>